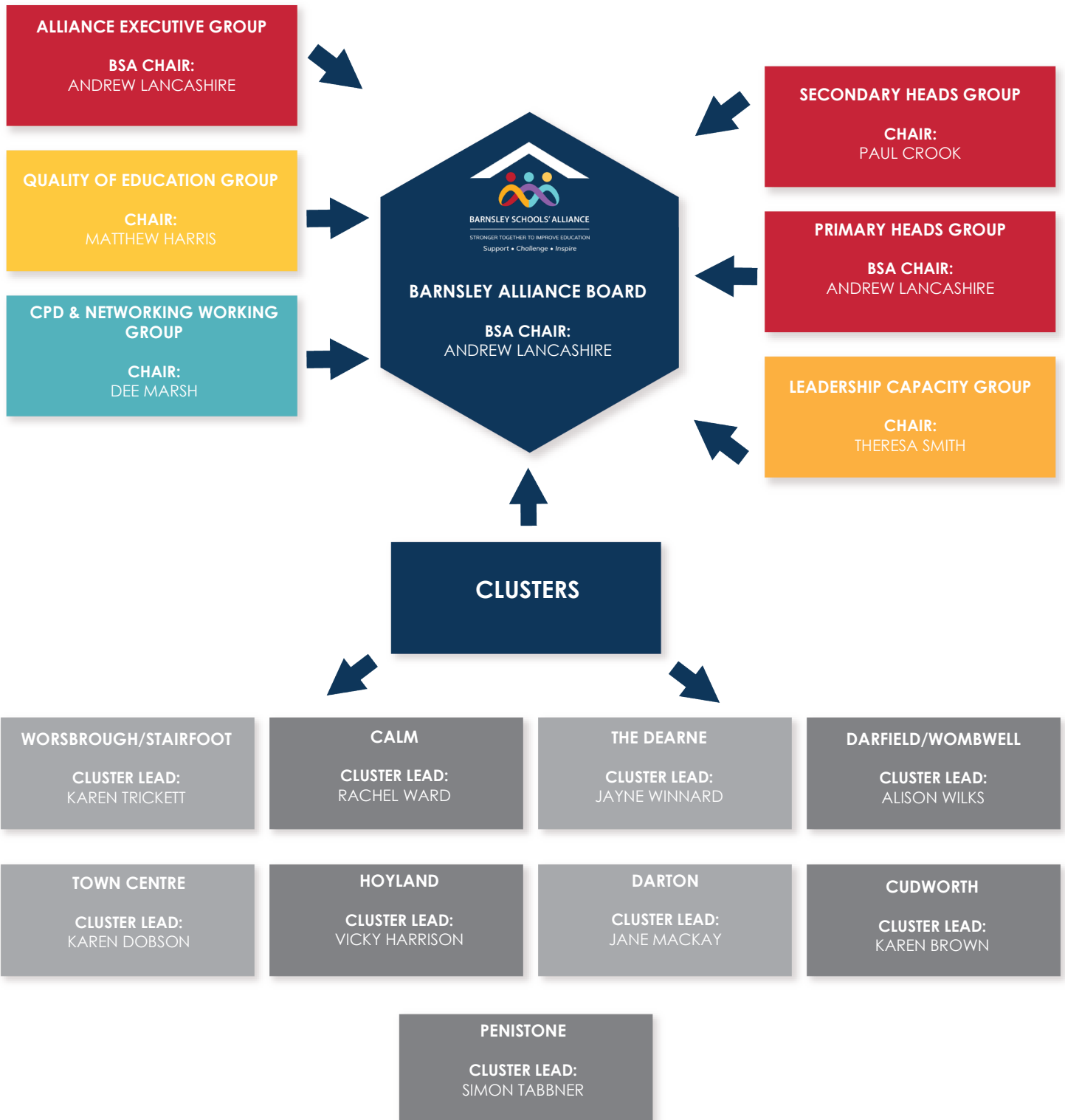


BARNSLEY SCHOOLS' ALLIANCE GOVERNANCE AND STRUCTURE

From September 2023 established one joint research group: Networking and CPD

BARNSLEY SCHOOLS' ALLIANCE BOARD



BARNSLEY SCHOOLS' ALLIANCE BOARD MEMBERSHIP

Dean Buckley - Secondary (Co Chair)
Andrew Lancashire - Primary (Co Chair)
Carly Speechley – Executive Director, People
Nina Sleight - Service Director, Education, Early Start and Prevention
Anna Turner - Head of Education and Partnerships
Theresa Smith - Leadership Capacity Group Chair
Matthew Harris - NLE (LA Maintained) / Quality of Education Group Chair
Joanne Bentley - School Evaluation Officer, BMBC
Brian Beal - Interim School Evaluation Officer, BMBC
Councillor Trevor Cave – Education, BMBC
Gerry Wilson - NLE (Academy, ECM)
Tom Banham - NLE (Academy, HCAT)
Dee Marsh - Director, TYKES Teaching Alliance
Jo Twiby - Executive Director, Barnsley and Doncaster Teaching Hub
Thomas Oates - Virtual Head for looked after children
Rachel Ward - CARM Cluster Lead
Gillian Clark - Hoyland Cluster Lead
Simon Tabbner - Penistone Cluster Lead
Karen Dobson - Town Centre Cluster Lead
Alison Wilks - Darfield / Wombwell Cluster Lead
Karen Trickett - Worsbrough / Stairfoot Cluster Lead
Jane MacKay - Darton Cluster Lead
Karen Brown - Cudworth Cluster Lead
Jayne Winnard - Dearne Cluster Lead
Margaret Gostelow - Governor, BGA
Molly Beaver - Governor, BGA
Hanna Bailey - Communication and Marketing Manager, BMBC
Bev Bradley - SEND Improvement Officer, BMBC
Sam Tingle - Senior EYFS Consultant, BMBC
Dean Buckley - Secondary Representative (NET Academy Trust)
Jane Allen - Education Welfare Service Manager, BMBC
Helen Collins - Business Improvement and Intelligence Officer, BMBC
Susan Day – Head of SEND, BMBC
Peter Bell - Service Manager, Governor Services, BMBC
Andy Barnett – Executive Headteacher, Secondary (Academy, Delta)
Emma Sanderson – Athersley South, Primary (Academy)
Richard Lazenby - Early Years Consultant, BMBC
Victoria Hanley – CYP Emotional Health and Wellbeing Lead, COMPASS
Annette Carey – Strategic Safeguarding Partnership Manager